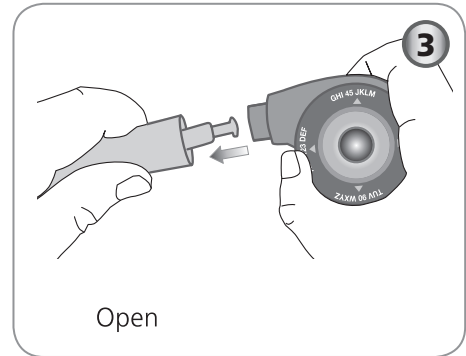
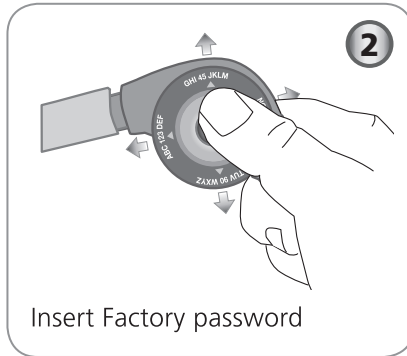
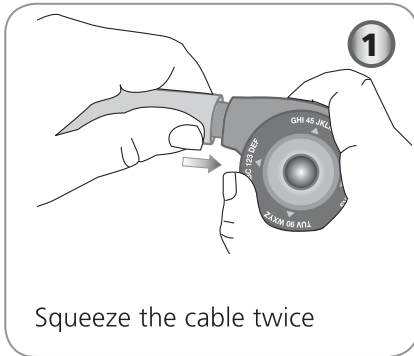


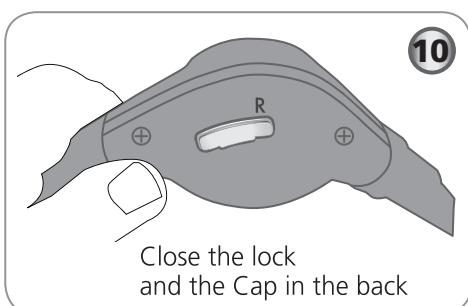
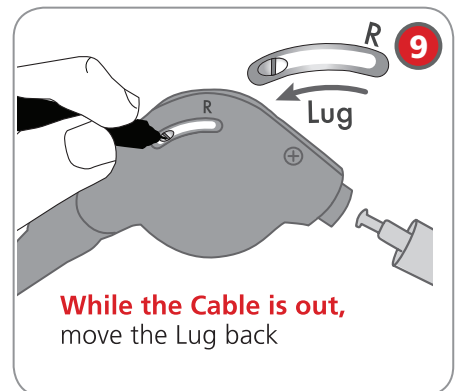
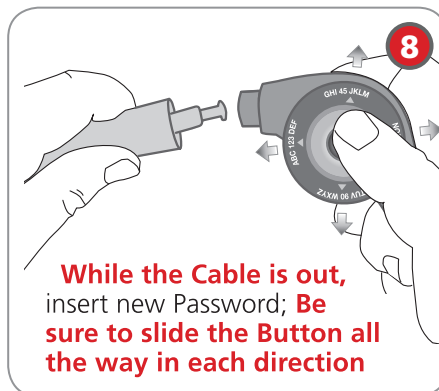
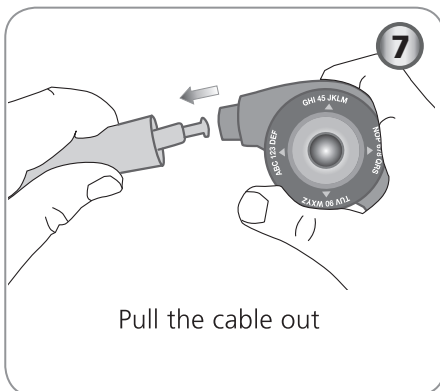
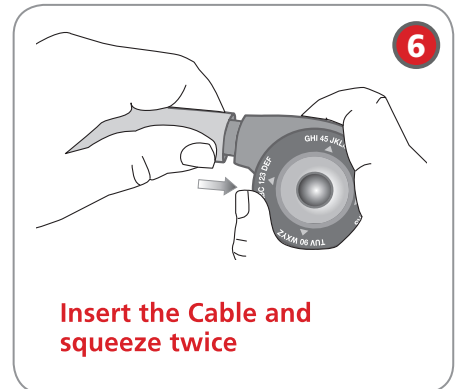
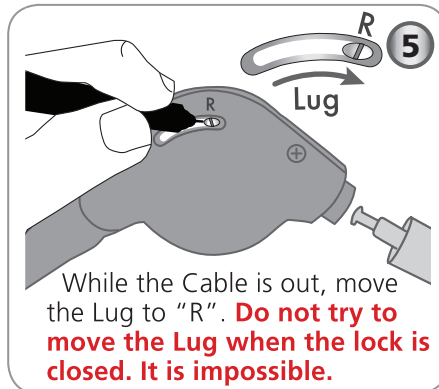
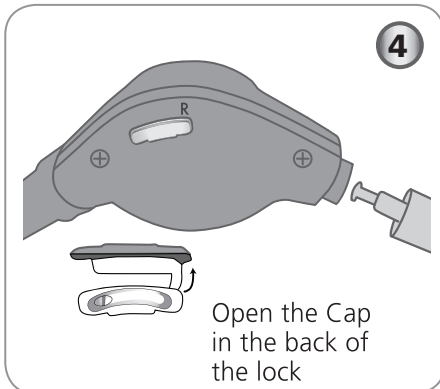
Knollan's SalyTM Wheel Operating Instructions

HOW TO OPEN THE LOCK:



HOW TO CHANGE THE PASSWORD:

Open the lock using the instructions above. Each time you are not sure, you can go back to Step 6 and start again. **You cannot go back after Step 9.**



**FACTORY
PASSWORD:
1 - 6 - 9 - 4**